



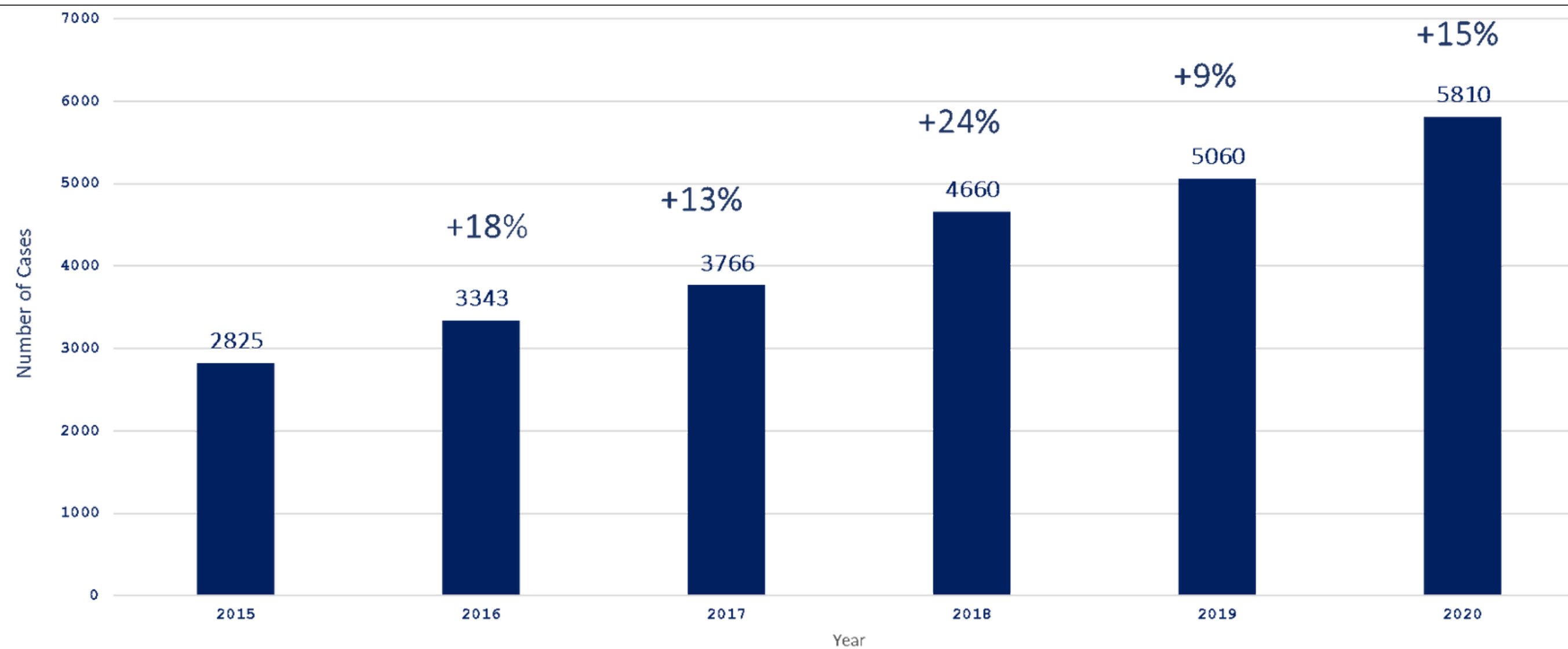
Joe D. Gonzales

Bexar County Criminal District Attorney



Family Violence Division

Total Felony Family Violence Cases Received



- From 2015-2020, family cases received by the Bexar County DAO have increased 105%.
- The most significant increases from 2015-2020 occurred in 2016 and 2018.

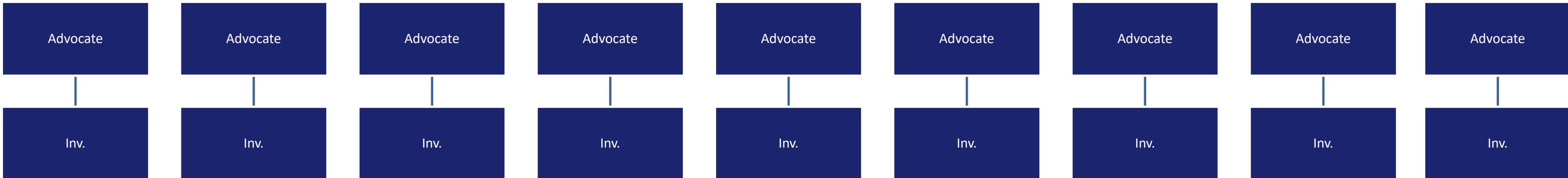
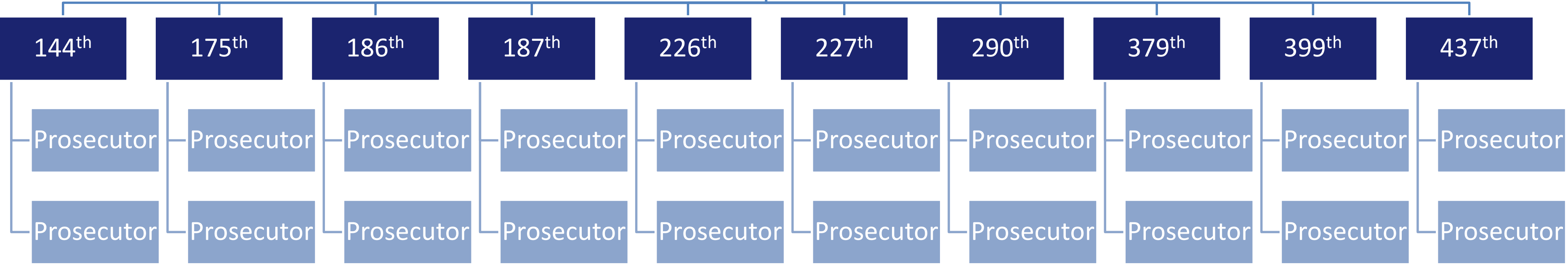


Joe D. Gonzales

Bexar County Criminal District Attorney

2018 Felony Staff

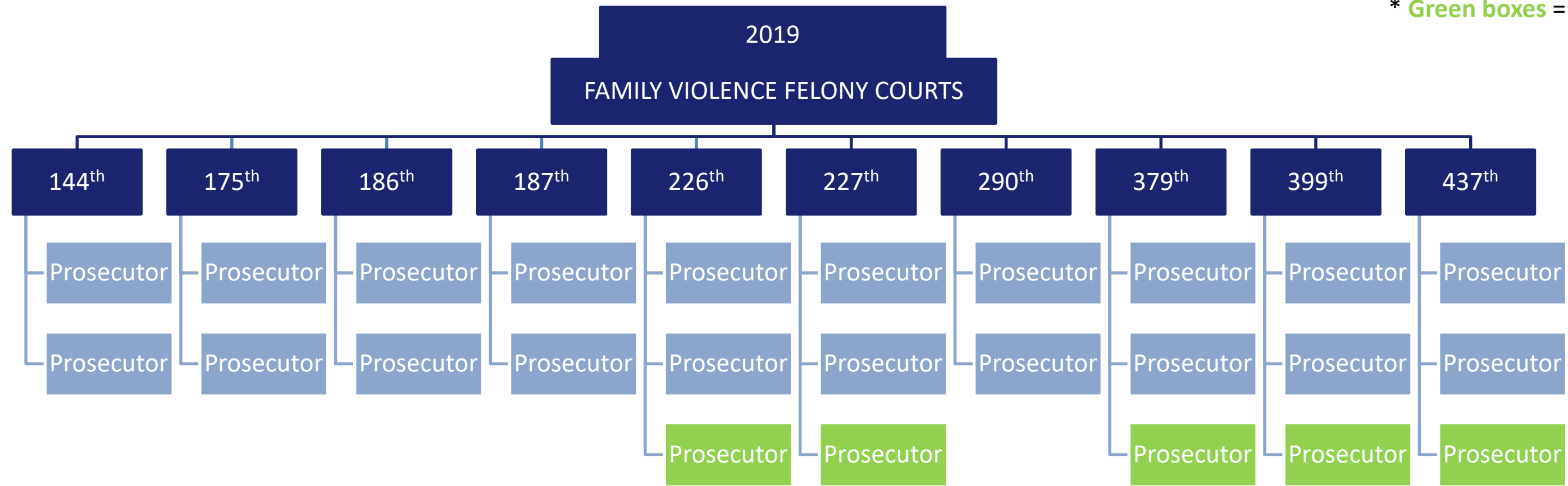
FAMILY VIOLENCE FELONY COURTS



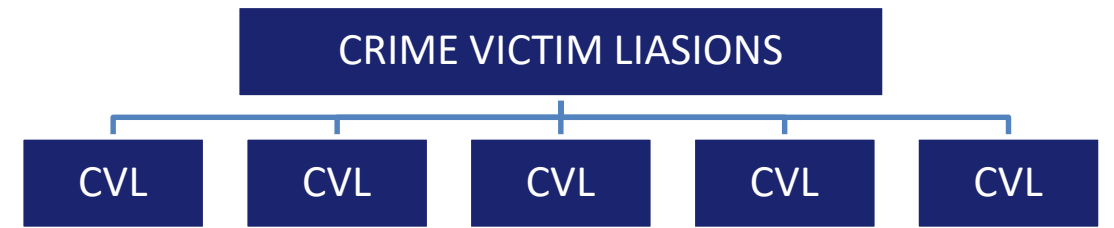
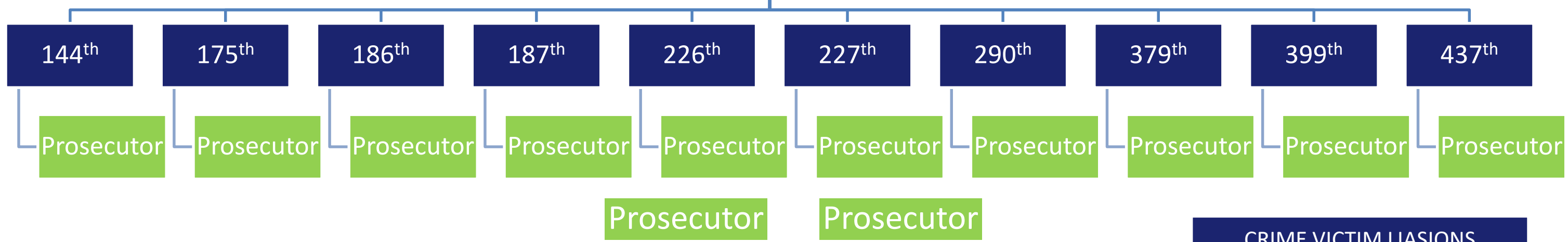
CRIME VICTIM LIASIONS



* Green boxes = New family violence staff.



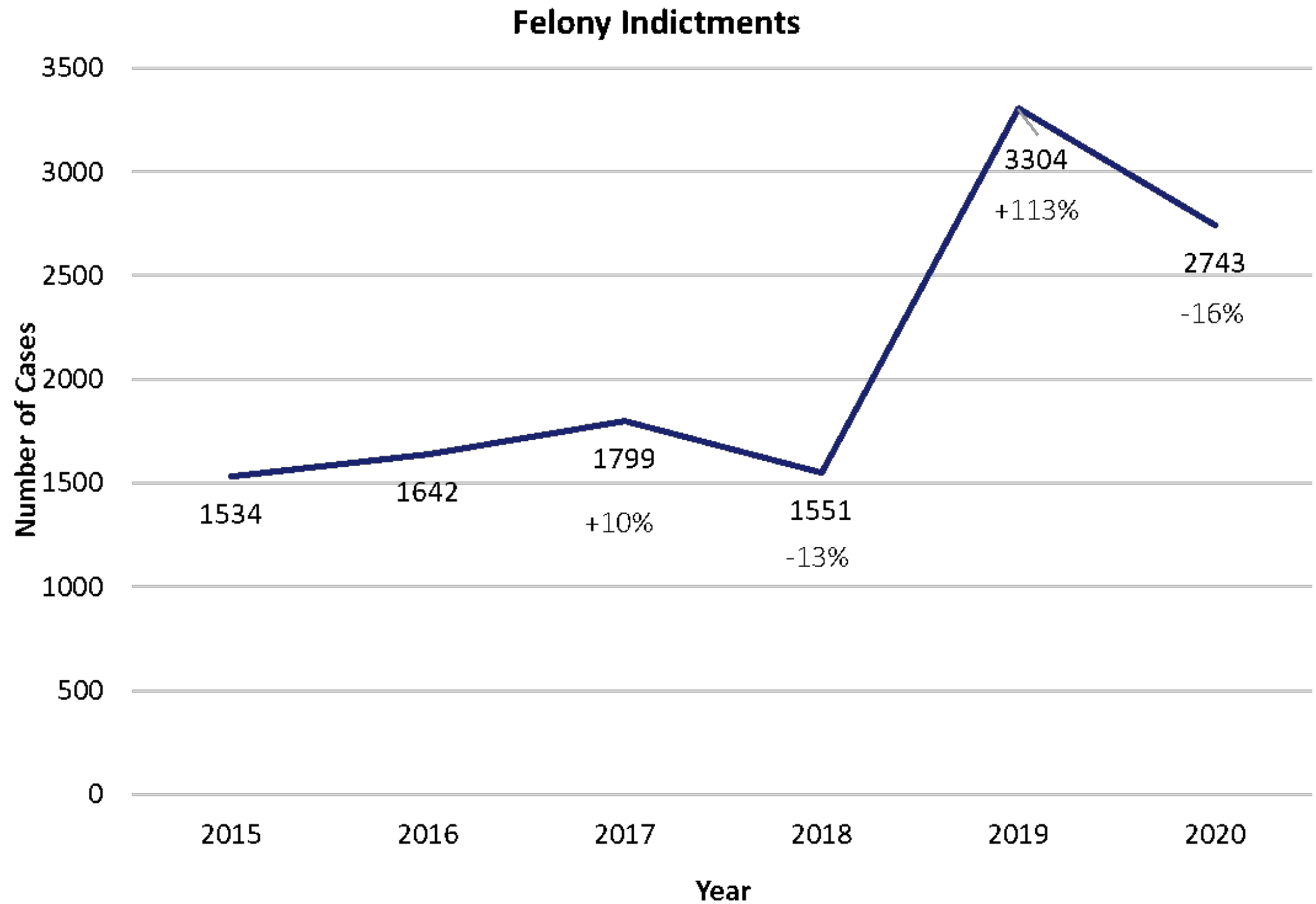
NEWLY CREATED FAMILY VIOLENCE INTAKE SECTION



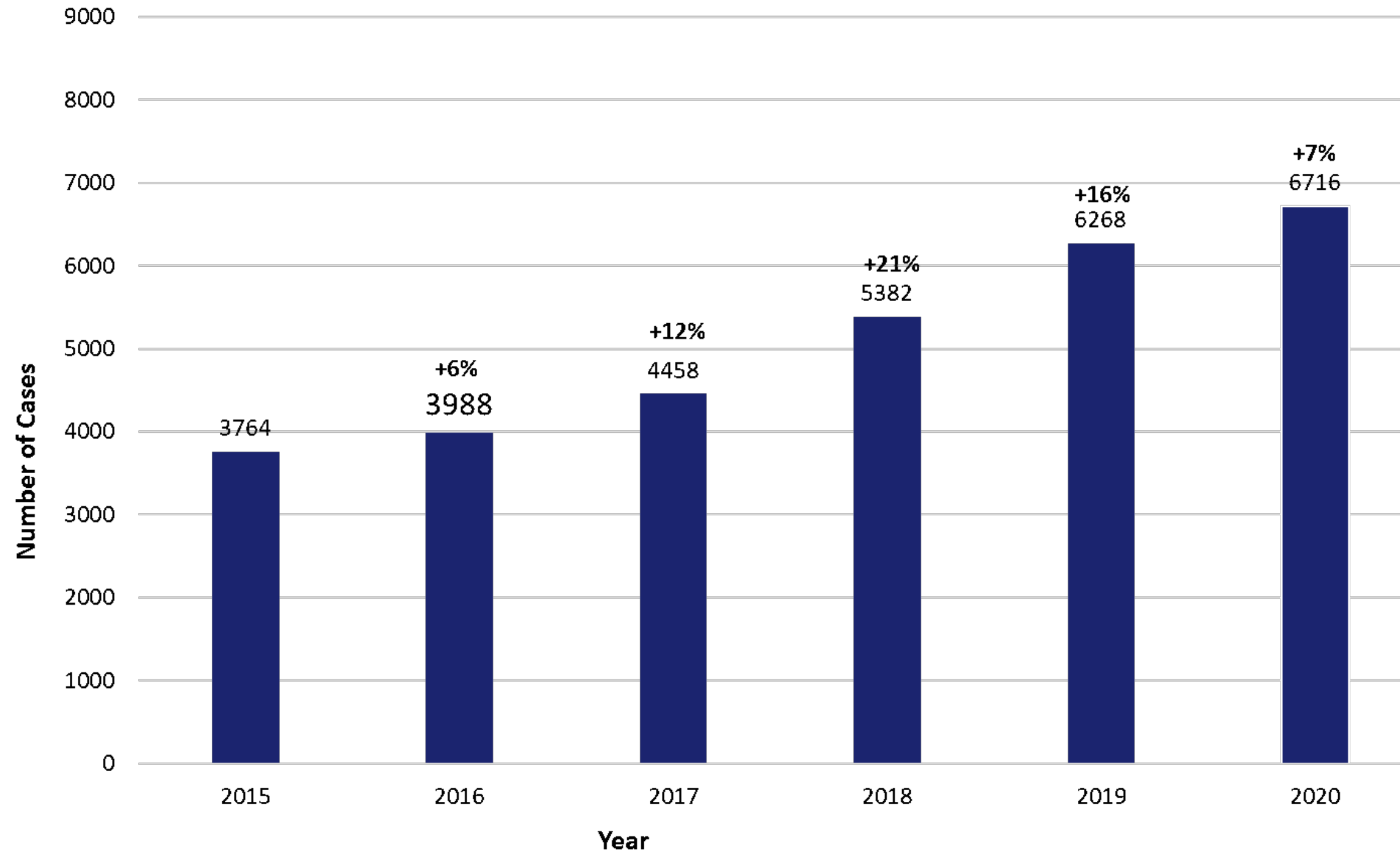
Felony Family Violence Backlog

Backlog by Year Case Was Filed with the Bexar County DAO	Number of Cases
2000-2014	91
2015	28
2016	93
2017	407
2018	2,687 (861 filed Jan-Jun 2018)

***In 2019 there was a backlog of 3,306 cases.**



Total Misd. Family Violence Cases Received



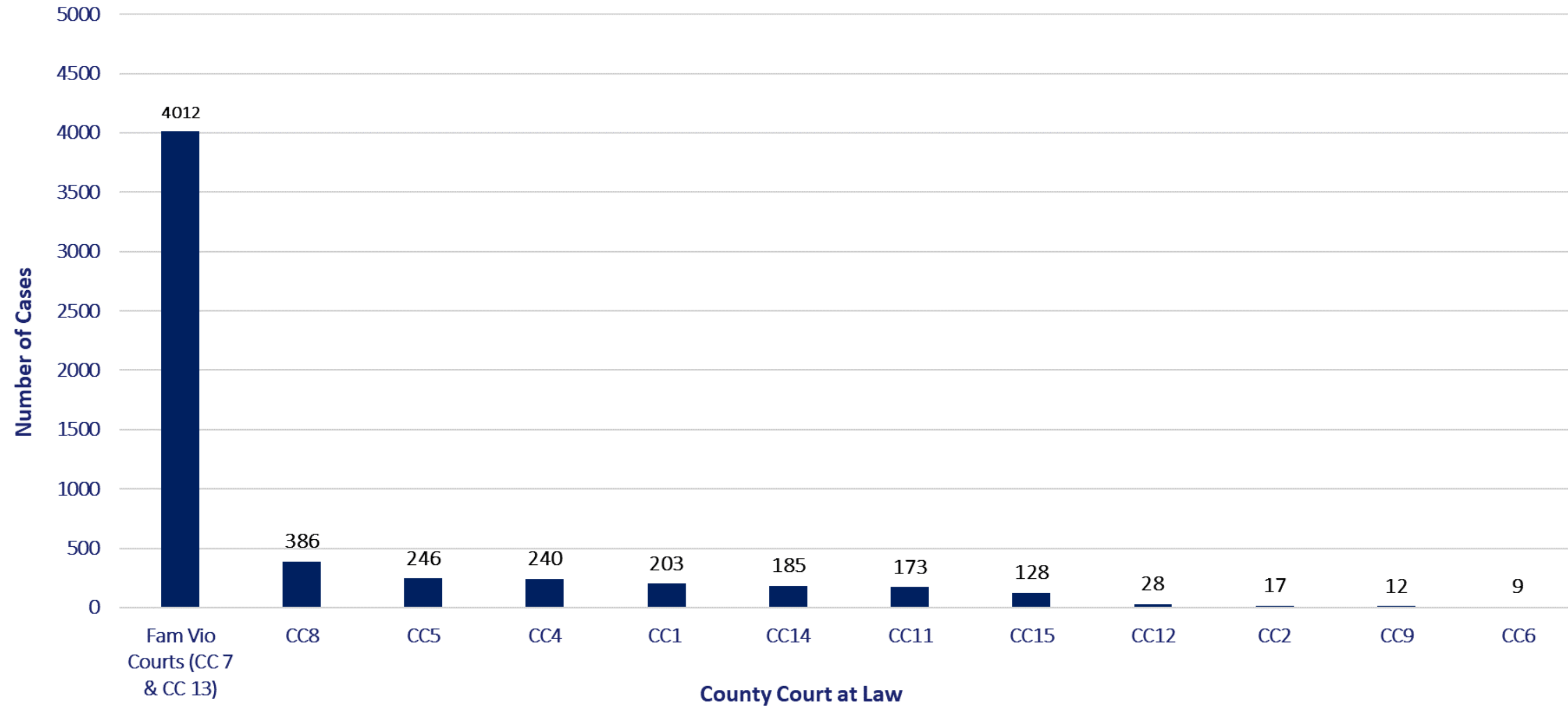
- Cases received by the Bexar County District Attorney's Office have increased by 78% since 2015.
- In 2020, 26% of all misdemeanor cases received were family violence.



Joe D. Gonzales

Bexar County Criminal District Attorney

Misd. Family Violence Case Distribution



Joe D. Gonzales

Bexar County Criminal District Attorney

Misd. Family Violence Workload

CC 7 & CC 13:
4,012 Cases

- 6 ADAs (increased by 2)
- Caseload per ADA: 668

- 3 Advocates (increased by 1)
- Caseload per Advocate: 1,337

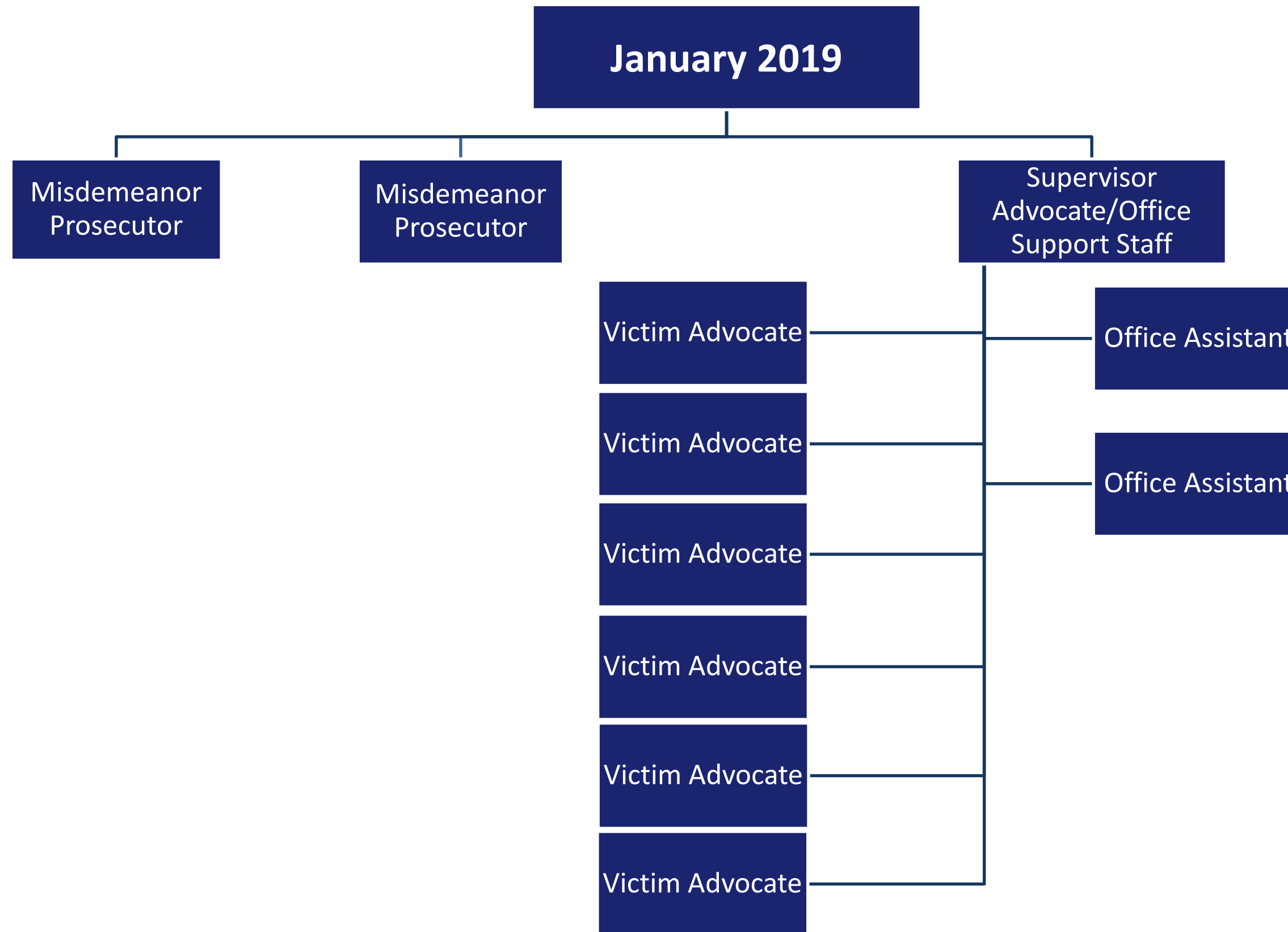
- 1 Investigator
- Caseload per Investigator: 4,012



Joe D. Gonzales

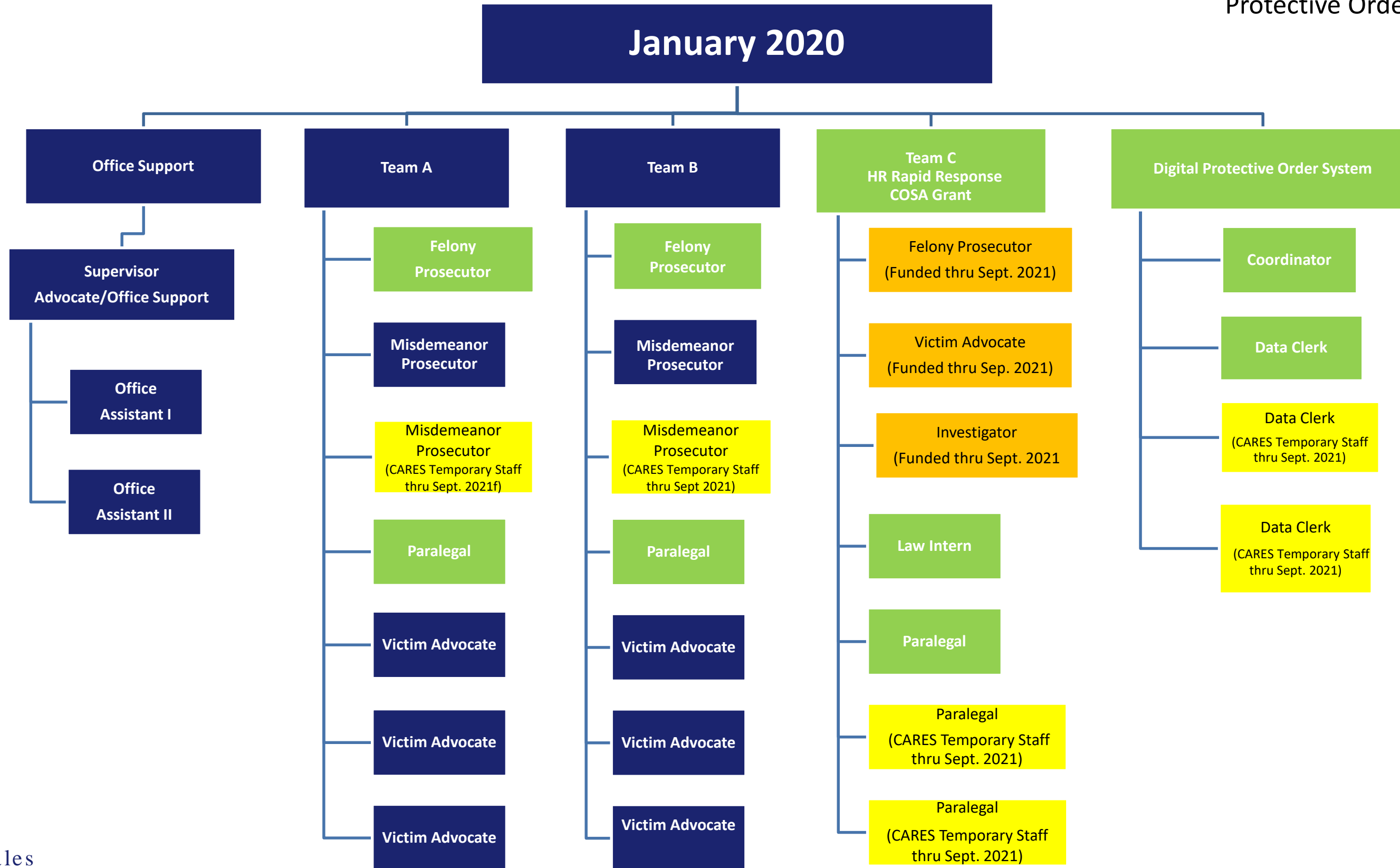
Bexar County Criminal District Attorney

Protective Order Unit

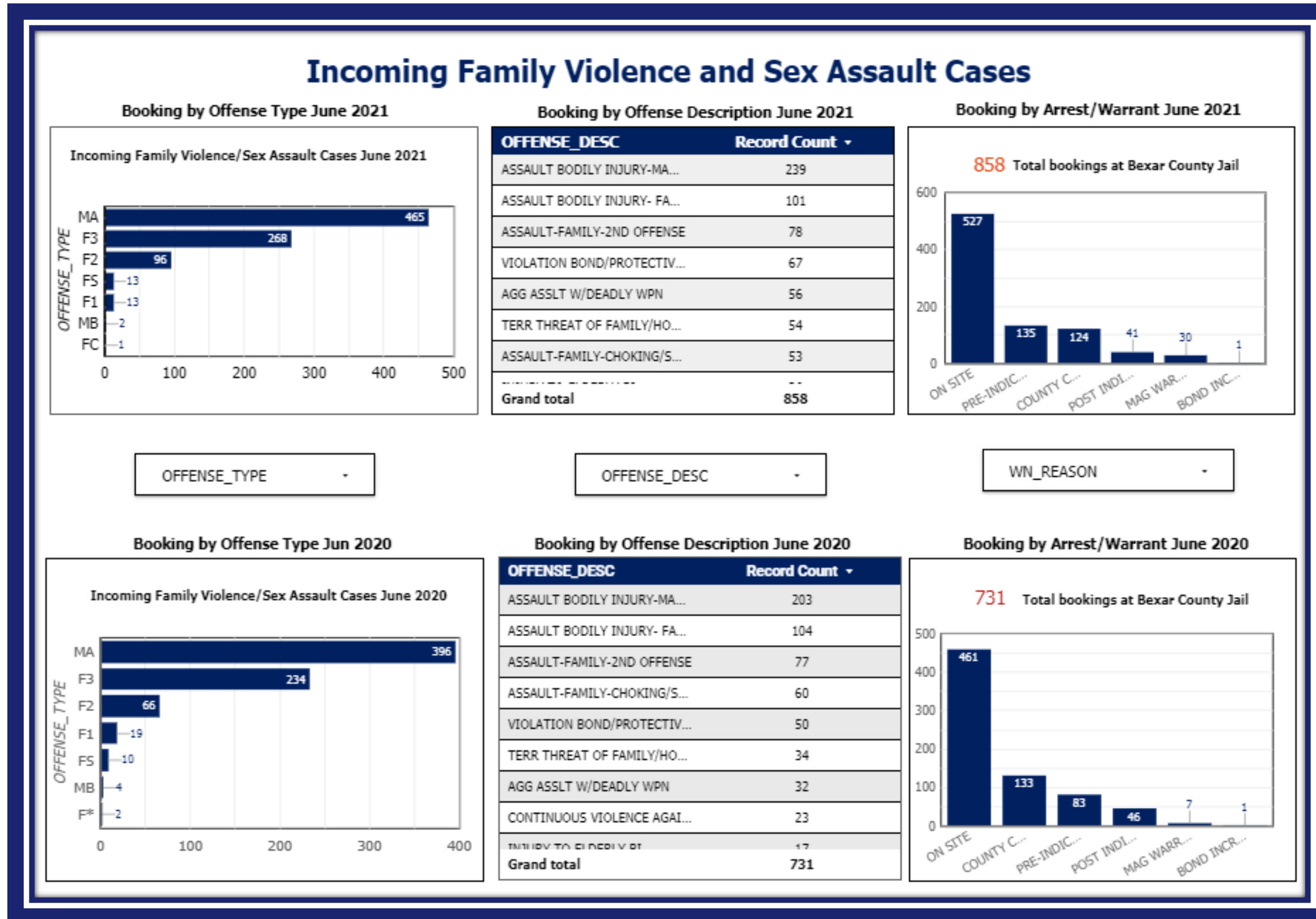


Protective Order Unit

* **Green, Yellow, and Orange boxes** = New Protective Order Unit staff.



Data and Transparency



- The creation and digitization of the Bexar County District Attorney's Office data resources have created a deeper level of transparency, both internally and externally.
- Family Violence Dashboard (left) is one of four interactive public dashboards on the District Attorney's Office website.

Looking Forward...

- **Advocating for the even distribution of misdemeanor family violence cases across all County Courts.**
 - Until 2020 only two County Courts (CC 7 & CC 13) heard misdemeanor family violence cases.
- **Requested increase in staff for misdemeanor family violence.**
 - In 2019, one additional advocate position was created.
 - In 2020, two additional ADA positions were created for misdemeanor family violence.
 - Requesting additional positions in the next budget cycle.
- **Created internal Misdemeanor Family Violence Work Group**
 - Staff, prosecutors & administrators examining every stage of the system to improve outcomes for victims and the community and accountability for defendants.



Joe D. Gonzales

Bexar County Criminal District Attorney