

# Bexar County Juvenile Probation

Referral Trends YTD Thru June, 2020

## Delinquent Conduct Referrals

Felonies	2014	2015	2016	2017	2018	2019	YTD Thru Jun, 2020	YTD Thru Jun, 2019	# Change	% Change
<b>Violent Referrals</b>										
Murder/Manslaughter	5	4	3	4	6	10	4	4	0	+0%
Attempted Murder	0	0	0	0	0	0	0	0	0	n/a
Criminal Neg. Homicide	0	0	0	0	0	0	0	0	0	n/a
Sexual Assault, related	94	90	73	86	133	167	74	91	(17)	-19%
Robbery	33	42	58	70	59	125	55	70	(15)	-21%
Aggravated Assault	149	174	175	230	246	272	123	151	(28)	-19%
<b>Total Violent Referrals:</b>	<b>281</b>	<b>310</b>	<b>309</b>	<b>390</b>	<b>444</b>	<b>574</b>	<b>256</b>	<b>316</b>	<b>(60)</b>	<b>-19.0%</b>
<b>Non-Violent Referrals</b>										
Burglary	119	126	81	121	65	76	47	34	13	+38%
Theft	30	16	22	31	18	26	19	20	(1)	-5%
Motor Vehicle Theft/UUMV	39	37	49	69	84	112	61	63	(2)	-3%
Arson	8	14	11	9	13	10	4	6	(2)	-33%
Drug Offenses	119	127	131	129	162	276	81	141	(60)	-43%
Criminal Mischief-Graffiti	111	52	5	0	2	1	0	1	(1)	-100%
Weapons Violations	32	29	25	33	20	24	4	13	(9)	-69%
Other	96	108	122	119	176	173	58	88	(30)	-34%
<b>Total Non-Violent Referrals:</b>	<b>554</b>	<b>509</b>	<b>446</b>	<b>511</b>	<b>540</b>	<b>698</b>	<b>274</b>	<b>366</b>	<b>(92)</b>	<b>-25.1%</b>
<b>Total Felonies:</b>	<b>835</b>	<b>819</b>	<b>755</b>	<b>901</b>	<b>984</b>	<b>1,272</b>	<b>530</b>	<b>682</b>	<b>(152)</b>	<b>-22.3%</b>

Class A & B Misdemeanors	2014	2015	2016	2017	2018	2019	YTD Thru Jun, 2020	YTD Thru Jun, 2019	# Change	% Change
Assault	690	750	708	816	748	819	348	458	(110)	-24%
Criminal Mischief	117	112	118	130	85	113	38	79	(41)	-52%
Chriminal Mischief-Graffiti	31	25	20	11	8	1	3	1	2	+200%
Criminal Trespass	89	126	135	158	123	106	37	62	(25)	-40%
Evade/Resist/Hinder Arrest	303	305	255	310	293	334	101	192	(91)	-47%
Possession of Marijuana	817	670	699	731	725	618	178	409	(231)	-56%
Theft	609	455	326	312	252	244	70	142	(72)	-51%
Contempt of Court	11	1	0	0	0	0	0	0	0	n/a
Drugs - Other	79	77	69	84	48	41	18	23	(5)	-22%
Burglary - Vehicle	41	24	31	39	41	53	26	29	(3)	-10%
Other	150	180	171	169	221	259	97	144	(47)	-33%
Violations of Probation	917	797	741	651	719	544	170	291	(121)	-42%
<b>Total Class A &amp; B Misdemeanors:</b>	<b>3,854</b>	<b>3,522</b>	<b>3,273</b>	<b>3,411</b>	<b>3,263</b>	<b>3,132</b>	<b>1,086</b>	<b>1,830</b>	<b>(744)</b>	<b>-40.7%</b>
Total Felonies	835	819	755	901	984	1,272	530	682	(152)	-22.3%
Total Class A & B Misdemeanors	3,854	3,522	3,273	3,411	3,263	3,132	1,086	1,830	(744)	-40.7%
<b>Total Delinquent Conduct Referrals:</b>	<b>4,689</b>	<b>4,341</b>	<b>4,028</b>	<b>4,312</b>	<b>4,247</b>	<b>4,404</b>	<b>1,616</b>	<b>2,512</b>	<b>(896)</b>	<b>-36%</b>

## CINS Referrals

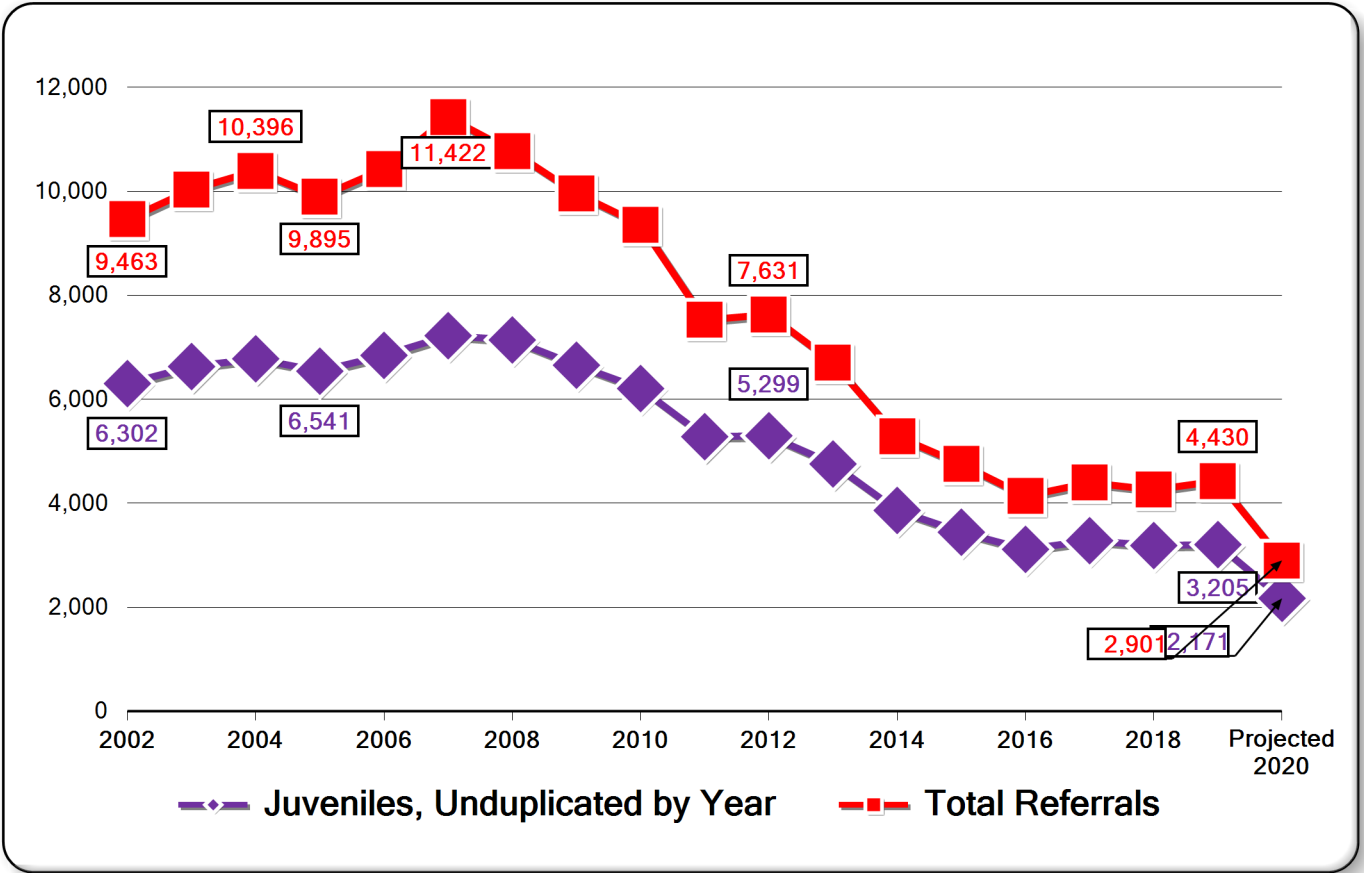
CINS Referrals	2014	2015	2016	2017	2018	2019	YTD Thru Jun, 2020	YTD Thru Jun, 2019	# Change	% Change
Runaway	87	90	83	48	0	1	0	1	(1)	-100%
Truancy	0	57	0	0	0	0	0	0	0	n/a
Contempt of Court	99	8	5	0	1	0	0	0	0	n/a
Liquor Laws	0	0	0	0	0	0	0	0	0	n/a
Expulsions	1	0	0	0	0	0	0	0	0	n/a
Other	407	255	21	35	10	25	35	3	32	+1067%
<b>Total CINS Referrals:</b>	<b>594</b>	<b>410</b>	<b>109</b>	<b>83</b>	<b>11</b>	<b>26</b>	<b>35</b>	<b>4</b>	<b>31</b>	<b>+775.0%</b>

## Referrals

Referrals	2014	2015	2016	2017	2018	2019	YTD Thru Jun, 2020	YTD Thru Jun, 2019	# Change	% Change
Total Felonies	835	819	755	901	984	1,272	530	682	(152)	-22.3%
Total Class A & B Misdemeanors	3,854	3,522	3,273	3,411	3,263	3,132	1,086	1,830	(744)	-40.7%
Total CINS Referrals:	594	410	109	83	11	26	35	4	31	+775.0%
<b>Total Referrals:</b>	<b>5,283</b>	<b>4,751</b>	<b>4,137</b>	<b>4,395</b>	<b>4,258</b>	<b>4,430</b>	<b>1,651</b>	<b>2,516</b>	<b>(865)</b>	<b>-34%</b>
<b>Total Juveniles:</b>	<b>3,862</b>	<b>3,443</b>	<b>3,113</b>	<b>3,280</b>	<b>3,186</b>	<b>3,205</b>	<b>1,374</b>	<b>2,029</b>	<b>(655)</b>	<b>-32.3%</b>

# Bexar County Juvenile Probation 7/5/2020

## Referral Trends through June, 2020



## Referral Trends through June, 2020

